

# PIGLET MORTALITY IN DANISH ORGANIC HERDS

---

Lena Rangstrup-Christensen, DVM, PhD Fellow

Department of Animal Science, Aarhus University, Denmark

Supervisors:

Jan Tind Sørensen & Lene Juul Pedersen

# THE PROJECT

---

- ▶ **Why?** An estimated preweaning mortality between 25 and 40%
- ▶ **What?** Identifying piglet mortality risk factors in Danish organic herds
- ▶ **How?**
  1. Registrations on the piglet mortality during one year
  2. Necropsies on a sample of dead piglets

# ON-FARM MORTALITY REGISTRATIONS

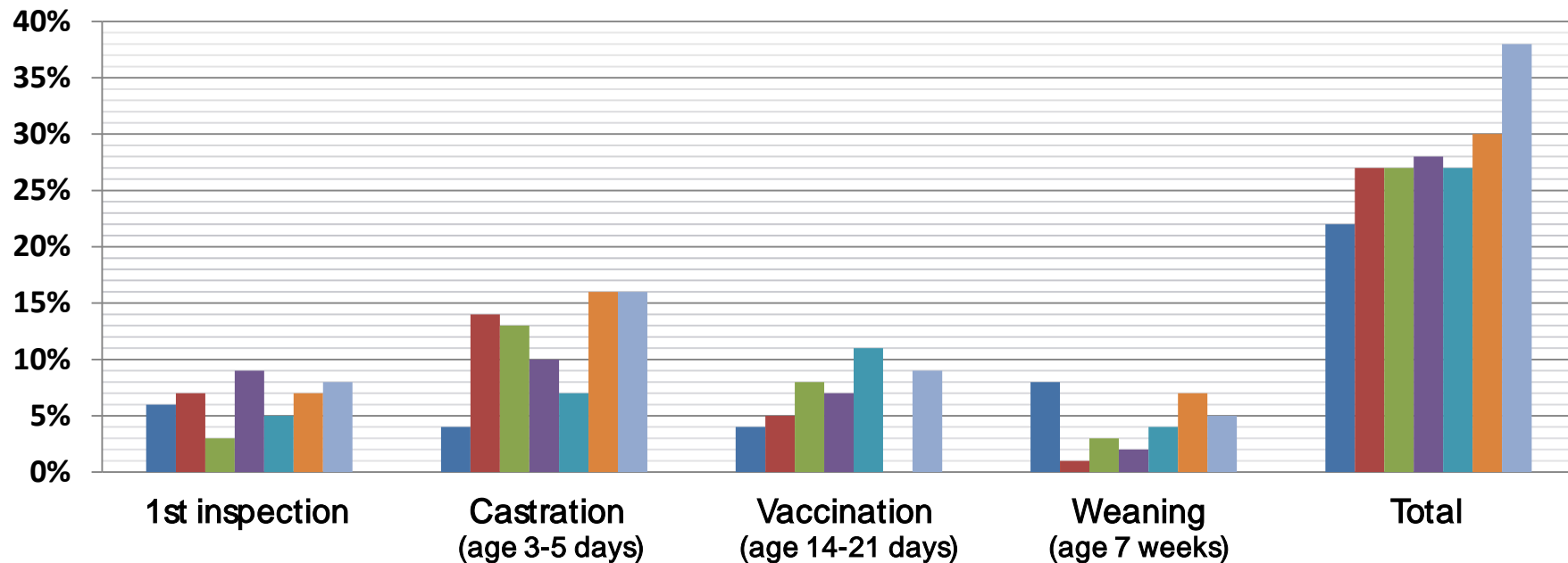
- ▶ A pocket sized booklet.
- ▶ Sows: Parity, body condition, lameness etc.
- ▶ Counting and registration of piglets;
  - 1st inspection after birth
  - Castration (or 3-5 days after birth)
  - Vaccination (or 14-21 days after birth)
  - Weaning (7 weeks after birth)
- ▶ June 2014 until May 2015.

Registrations on approximately 6000 farrowings

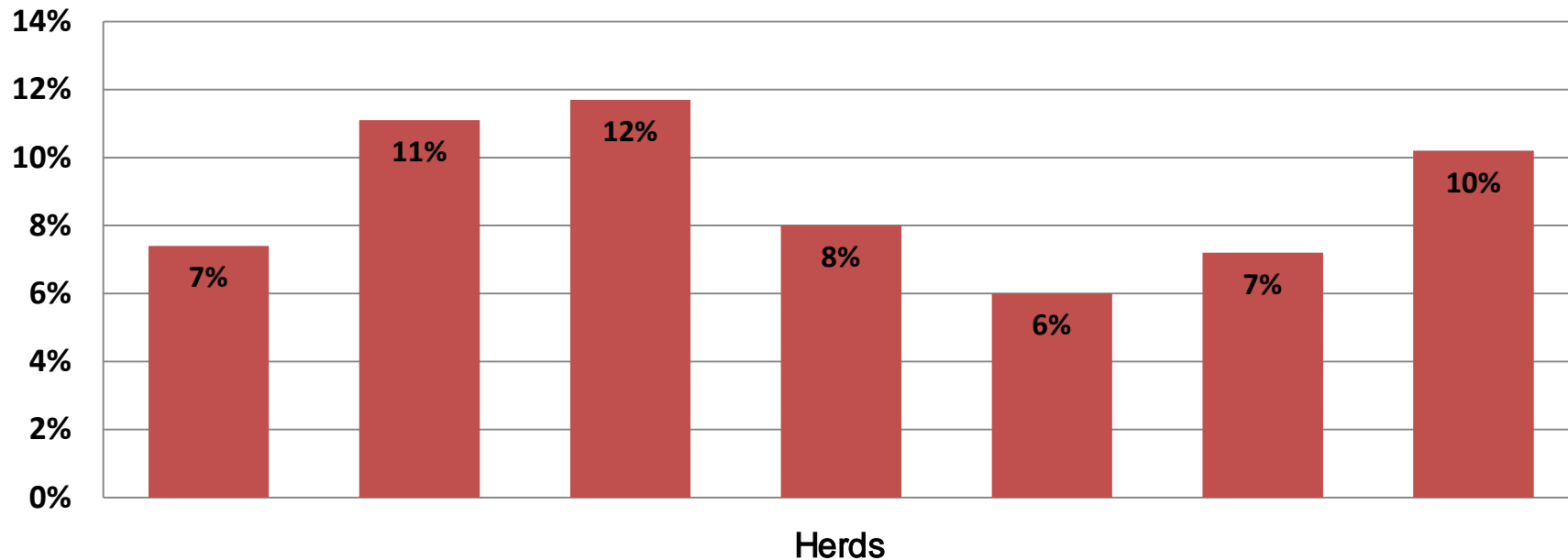
Hole:	So nr.	590	774	911	635	642	205
	Mytte	73	63	26	115	65	44
	Laug nr	5	2	1	4	4	3
	Fen nr/fælles fold						
Indsæt faremark	Dato	15/6	15/6	25/6	14/6	25/6	13/6
	Marthed (0-1) + Huld (2-4)	3	1	1	3	2	3
	Faring, dato	24/6	24/6	24/6	24/6	24/6	24/6
	L. tilsyn efter faring, dato						
Faring	Dødfødt	5	3		6	2	1
	Dødt efter faring (S/A)		1	5		3	5
	Levendefødt	19	20	3	18	24	22
	Heraf små (max. 23 cm)		2			1	
Indtil kastrering	Kuldudjævning +/-	-1	-5	+9	-3	-6	
	Antal pletter	14	19	14	14	15	
Gylte	Kastrering dato	30/6	24/6	24/6	24/6	24/6	24/6
	Antal gris v./start	14	14	12	14	12	13
	Altiv. efter optæl, antal						
	Evt. kuldudjævning +/-		7			-2	-2
Følgende/ vaccination	Dato	13/6	13/6	1	13/6	9/6	13/6
	Antal gris	13	13		10	12	13
Fravæning	Dato	24/6	24/6	14/6	24/6	24/6	24/6
	Antal gris frav. soen	12	11	2	10	12	10
Noter (per optæl):		fælles børge					

\*Løsning: 1. Færdig 2. yverbet, 3. ben 4. andet, Antibiotika

# PREWEANING MORTALITY - SUMMER 2014



# STILLBORN PIGLETS – SUMMER 2014



# LITTER SIZE - SUMMER 2014

---

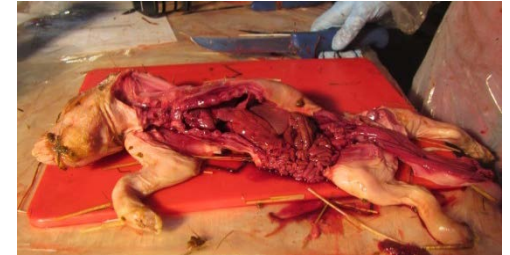
Herds							
Total litter size	15,90	17,62	17,58	14,73	15,71	14,90	15,07
Live born	14,72	15,66	15,53	13,55	14,77	13,83	13,54
Stillborn	1,18	1,96	2,05	1,18	0,94	1,07	1,53

# NECROPSIES

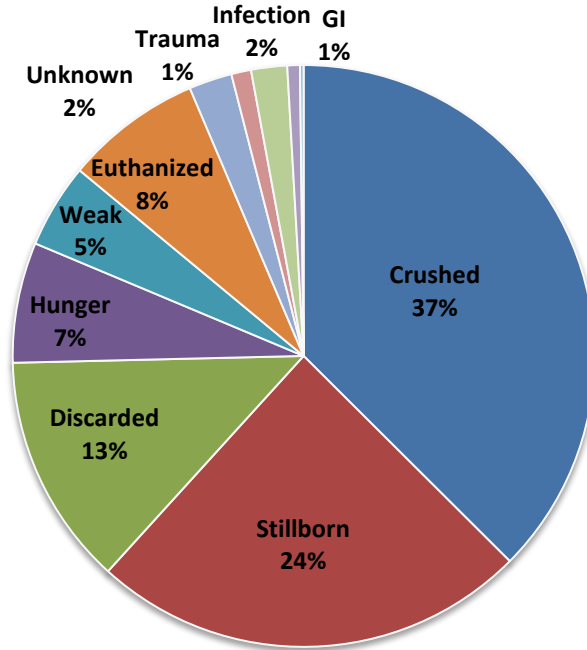
---

- ▶ Dead piglets from approximately 25 sows on each farm.
- ▶ 4 seasonal collection periods.
- ▶ Necropsies performed at the farms.
- ▶ Cause of death, body condition, stomach content etc.

Necropsies on approximately 4000 piglets

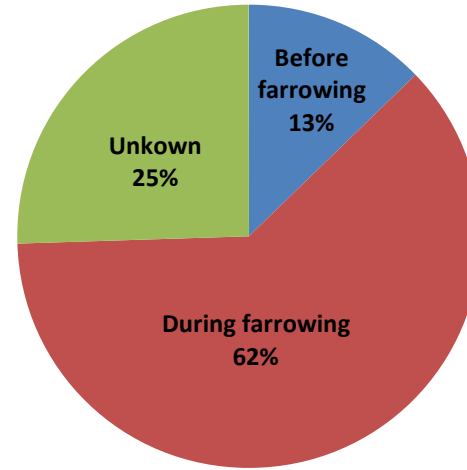
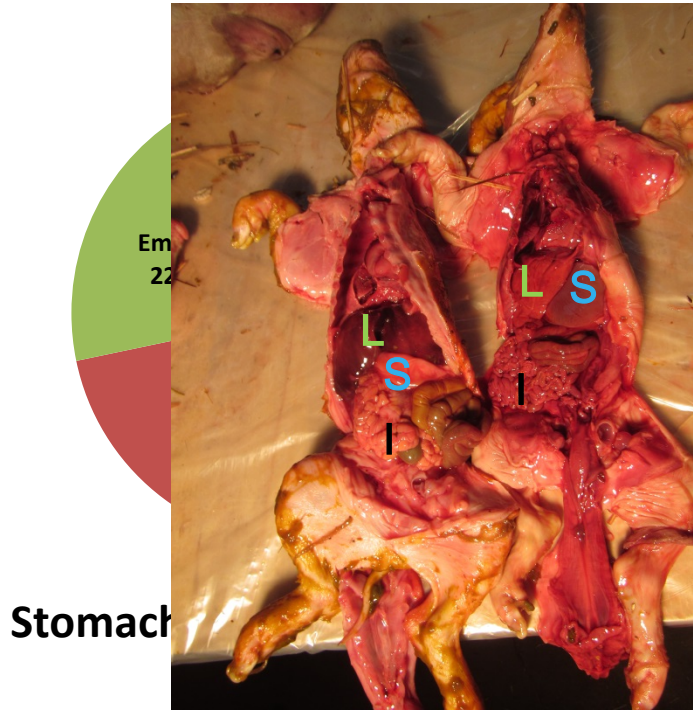


# NECROPSIES - SUMMER 2014





# NECROPSIES - SUMMER 2014



Time of death - Stillborn piglets

# SUMMARY PRELIMINARY RESULTS

---

- ▶ On farm mortality registrations – high mortality
  - › Hot summer in 2014!
- ▶ Necropsies
  - › Crushed piglets represent the largest group of diagnoses
  - › The majority of the crushed piglets had suckled before dying
  - › The majority of stillborn piglets die during the farrowing



# PERSPECTIVES

---

- ▶ Influence of sows parity, body condition and lameness?
- ▶ Enhanced survival if born in a small rather than in large litter?
- ▶ Higher mortality in piglets with many stillborn litter mates?
- ▶ Are small piglets more prone to crushing?
- ▶ Different patterns in mortality depending on season?
- ▶ Influence of management factors such as the use of nursing sows?



# THANK YOU FOR YOUR ATTENTION!

---

